
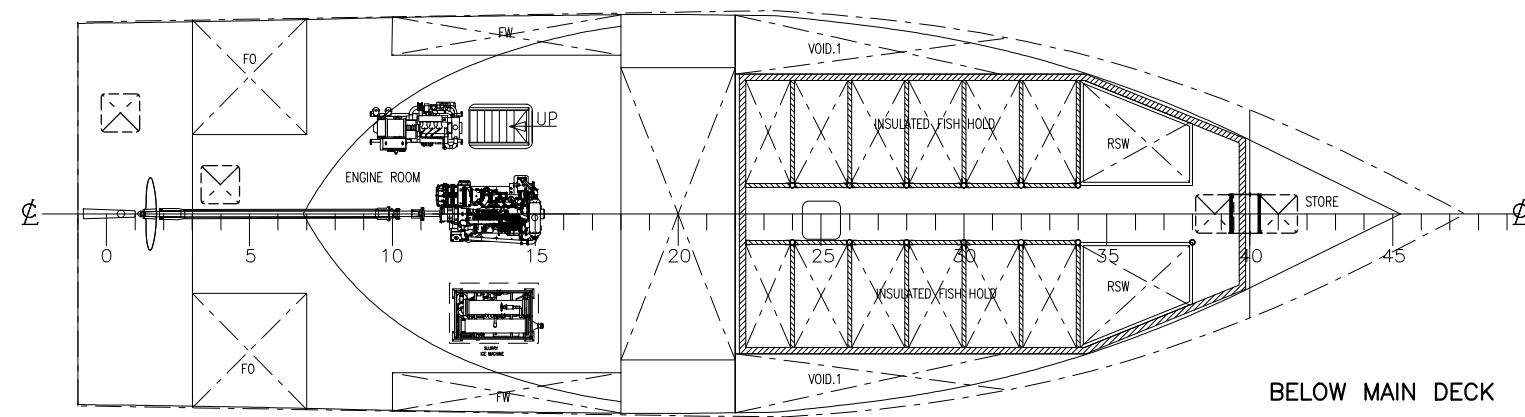
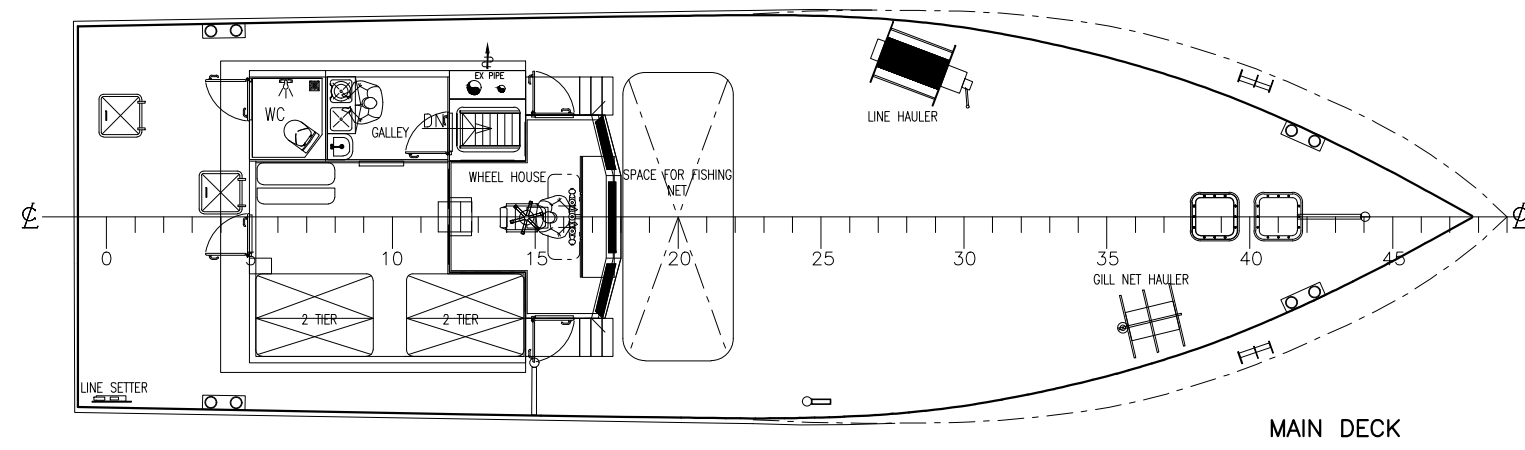
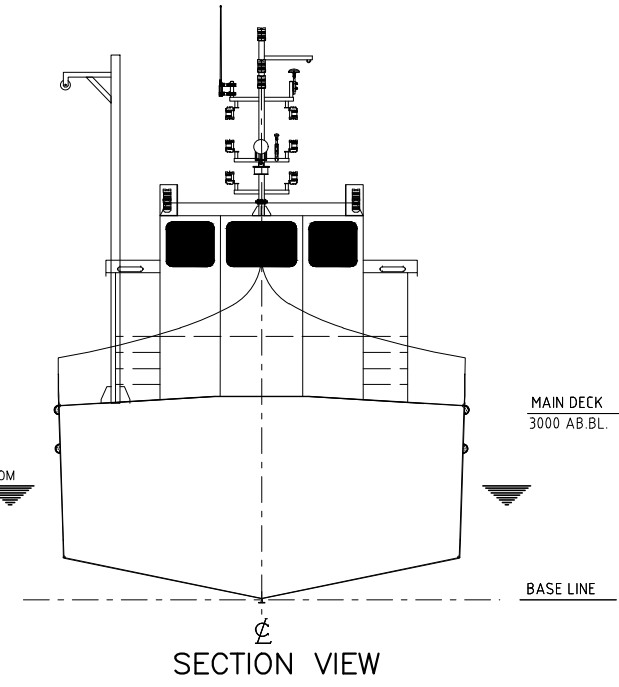
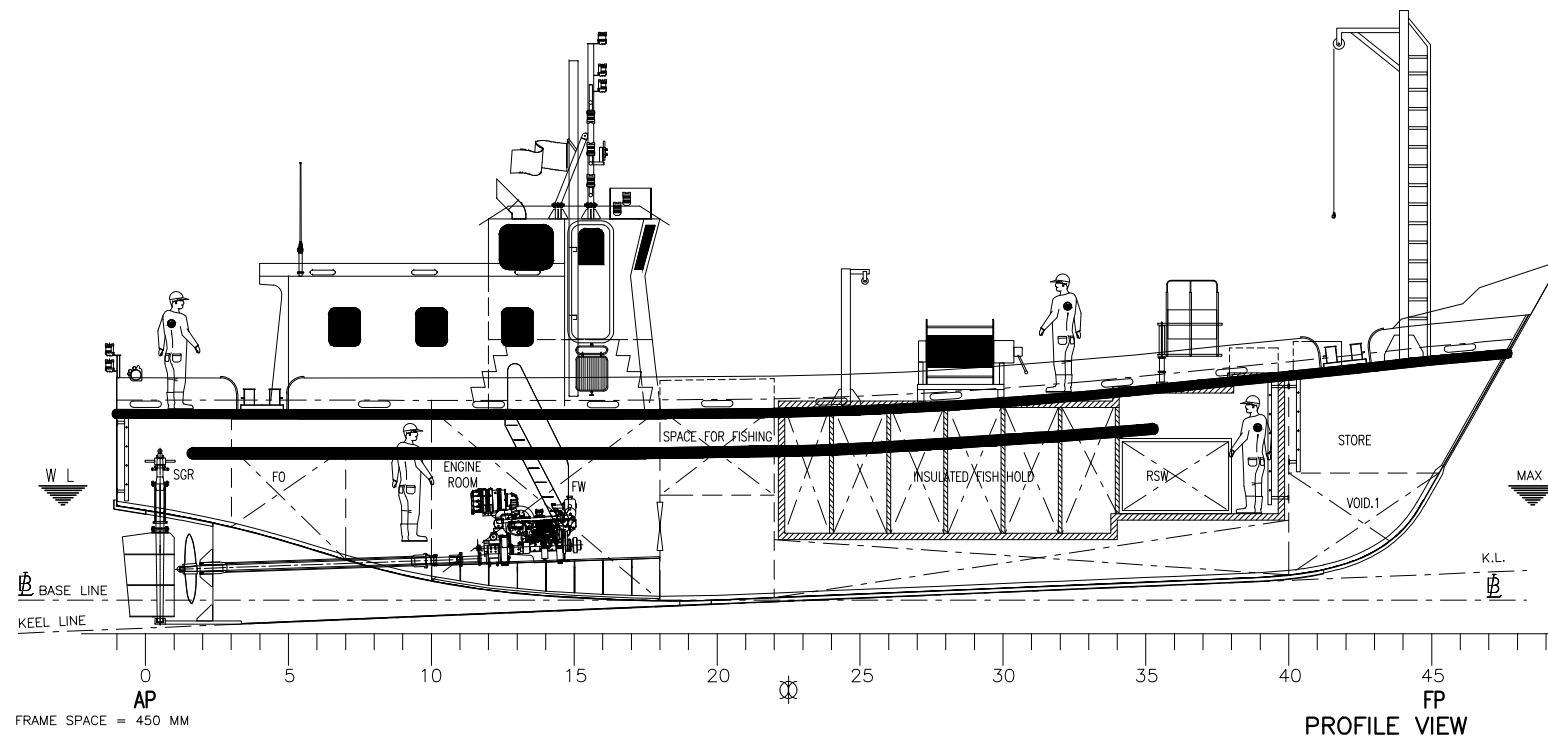


MAIN PARTICULARS :

LENGTH O.A..... abt 15.00 M.
 BREADTH (MLD)..... abt 5.00 M.
 DEPTH (MIDSHIP)..... abt 3.20 M.
 DRAFT (MAX.)..... abt 1.80 M.
 FRAME SPACING..... 450 MM
 SPEED..... 8 KNOTS.

 MAIN ENGINE..... 1 x 220 HP

CUSTOMER DEPARTMENT OF FISHERIES GOVT. OF ODISHA		15 m Loa WFRP- TRAWLER	
Yard Nos.:		TITLE GENERAL ARRANGEMENT	
 Design ICAR-CIFT COCHIN-29,		Scale	Rev.2
		1:80	ICAR-CIFT 2.5.2026
THIS DRAWING IS THE PROPERTY OF ICAR-CIFT, Cochin. THE DRAWING CAN NOT BE MADE PUBLIC, COPIED OR OTHERWISE USED, WITHOUT WRITTEN CONSENT.		Project No.	01/01
		Dwg. no.	Sheet No.



MAIN PARTICULARS :

LENGTH O.A..... abt 15.00 M.

BREADTH (MLD)..... abt 5.00 M.


DEPTH (MIDSHIP)..... abt 3.20 M.

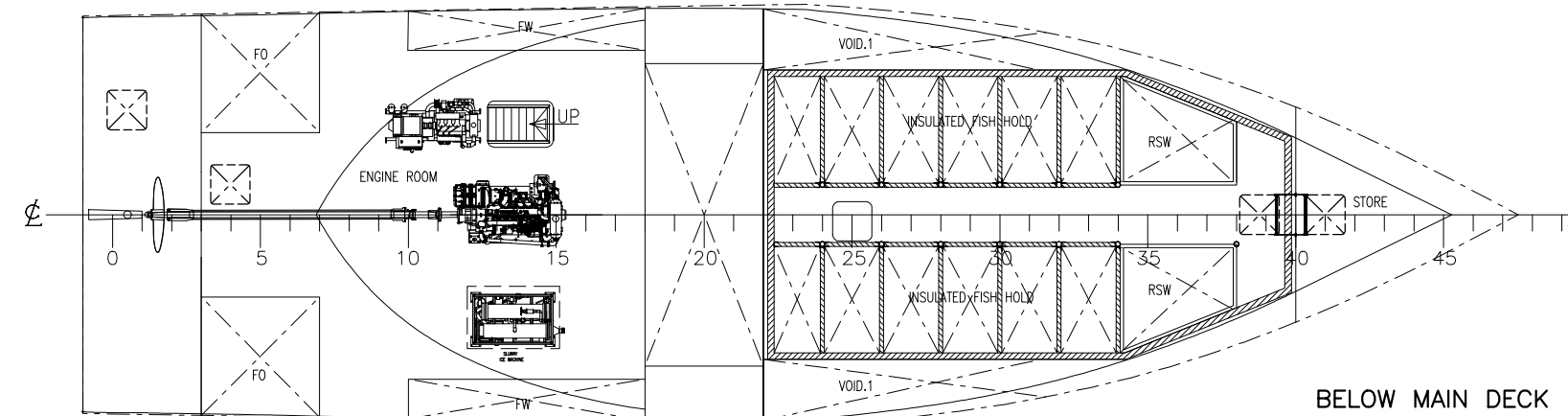
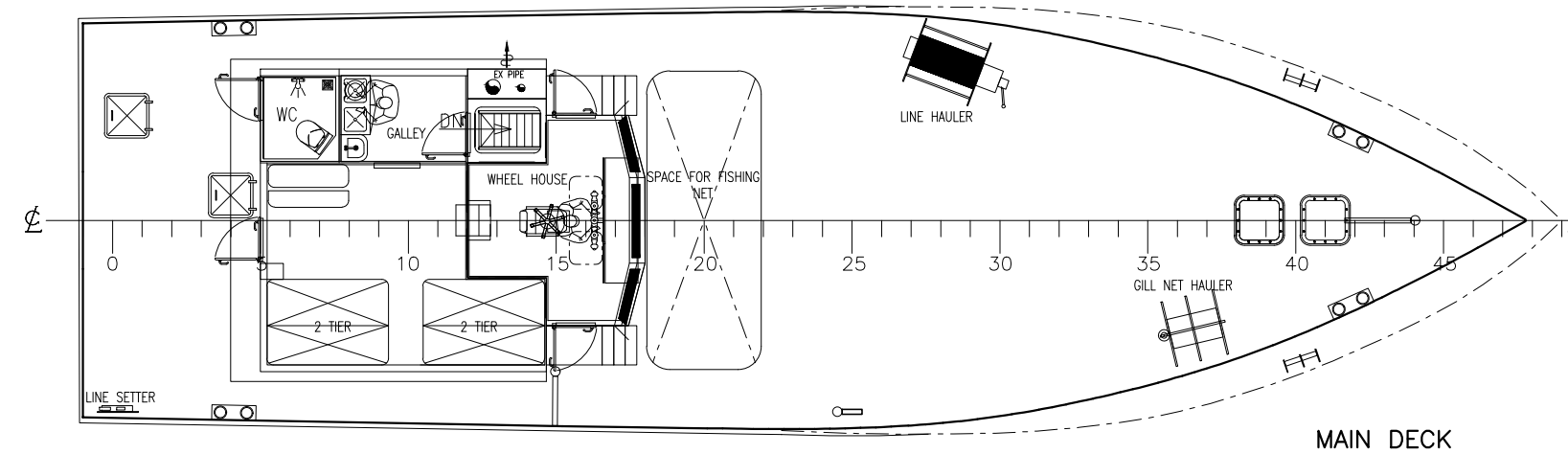
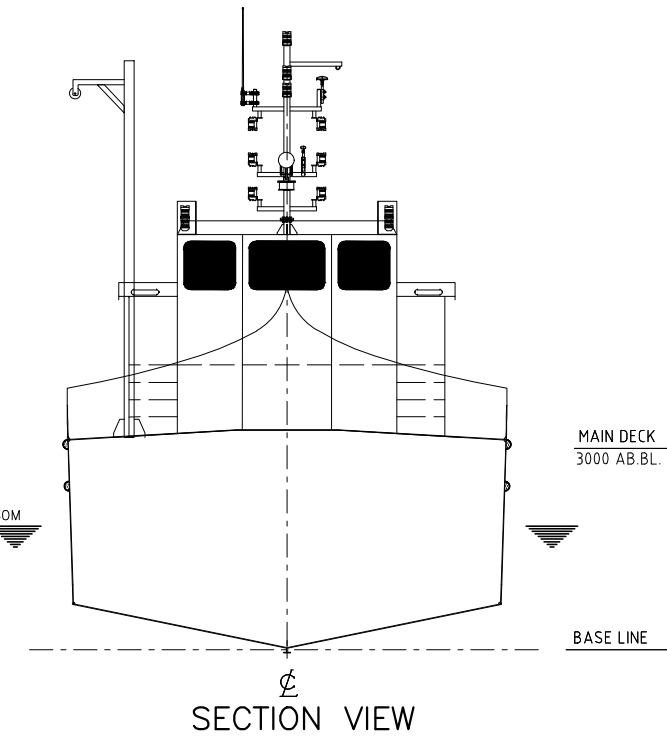
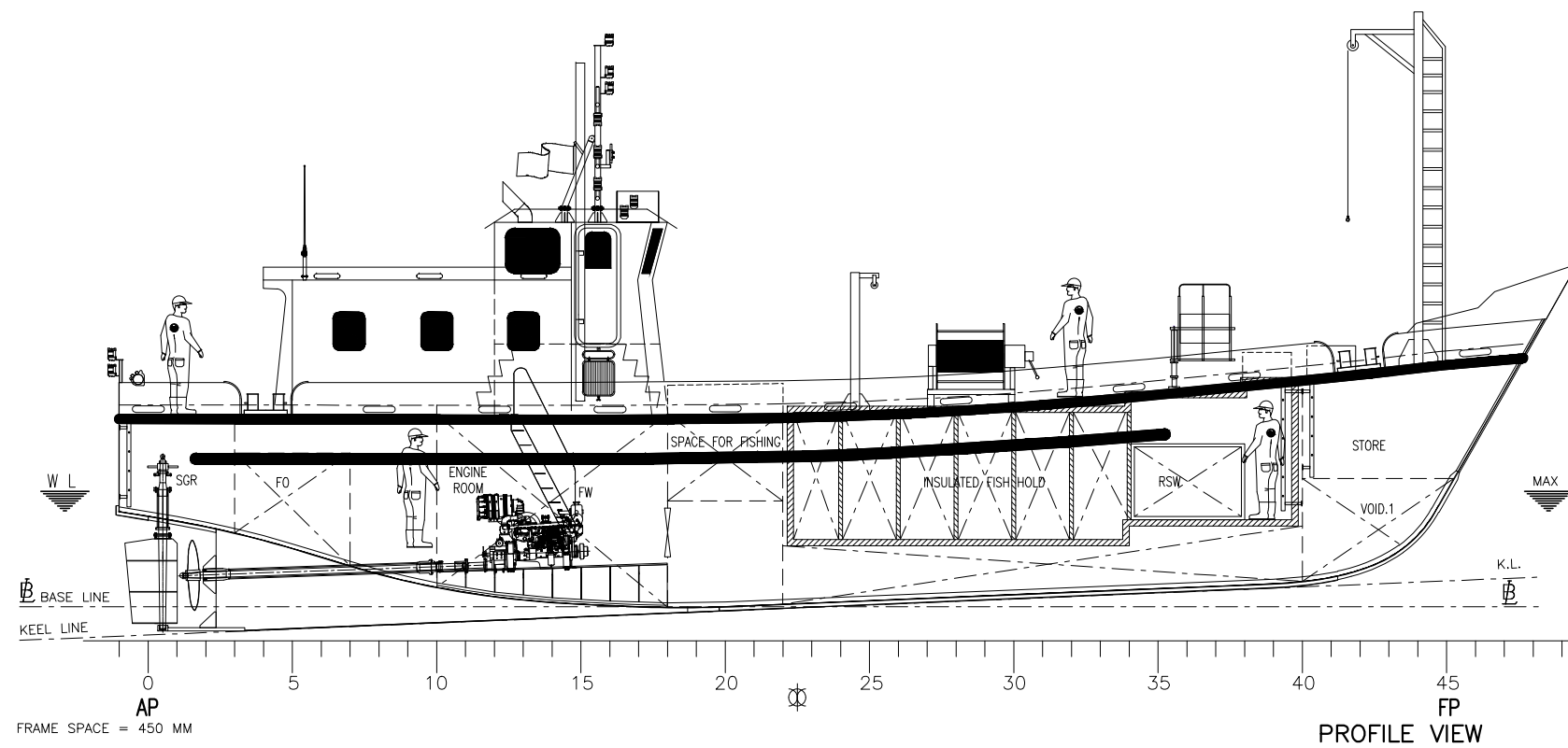
DRAFT (MAX.)..... abt 1.80 M.

FRAME SPACING..... 450 MM

SPEED..... 8 KNOTS.

MAIN ENGINE..... 1 x 220 HP

CUSTOMER DEPARTMENT OF FISHERIES GOVT. OF ODISHA	15 m Loa Wooden- TRAWLER		
	TITLE		
Yard Nos.:	GENERAL ARRANGEMENT		
 Design ICAR-CIFT COCHIN-29,	1:80	ICAR-CIFT 2.5.2026	Rev.2
	Scale	Project No.	Dwg. no.
THIS DRAWING IS THE PROPERTY OF ICAR-CIFT, Cochin. THE DRAWING CAN NOT BE MADE PUBLIC. COPIED OR OTHERWISE USED, WITHOUT WRITTEN CONSENT.			01/01
			Sheet No



MAIN PARTICULARS :

LENGTH O.A..... abt 18.00 M.

BREADTH (MLD)..... abt 6.20 M.


DEPTH (MIDSHIP)..... abt 3.50 M.

DRAFT (MAX.)..... abt 1.80 M.

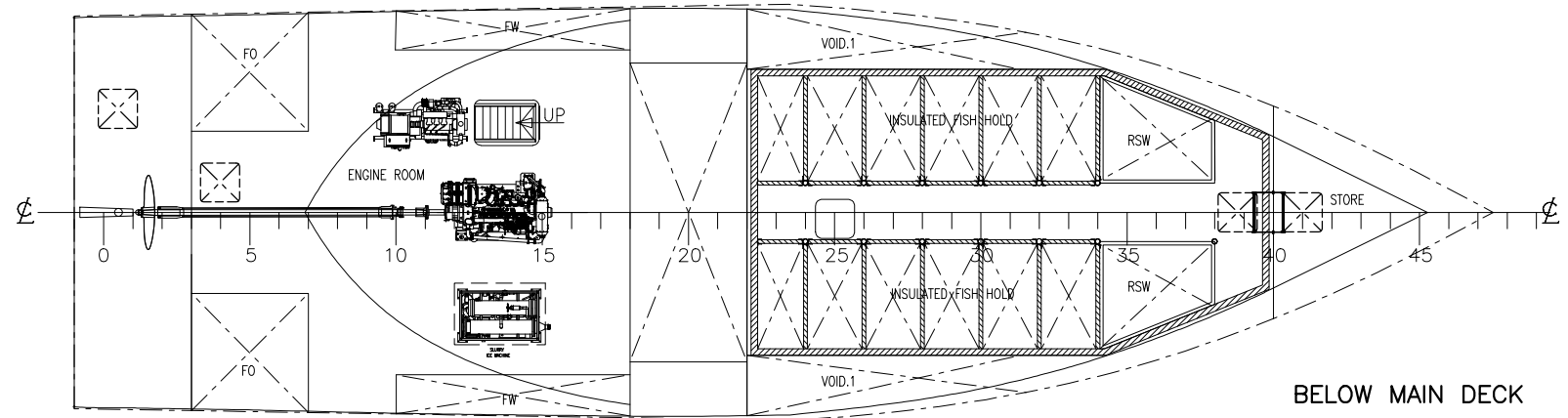
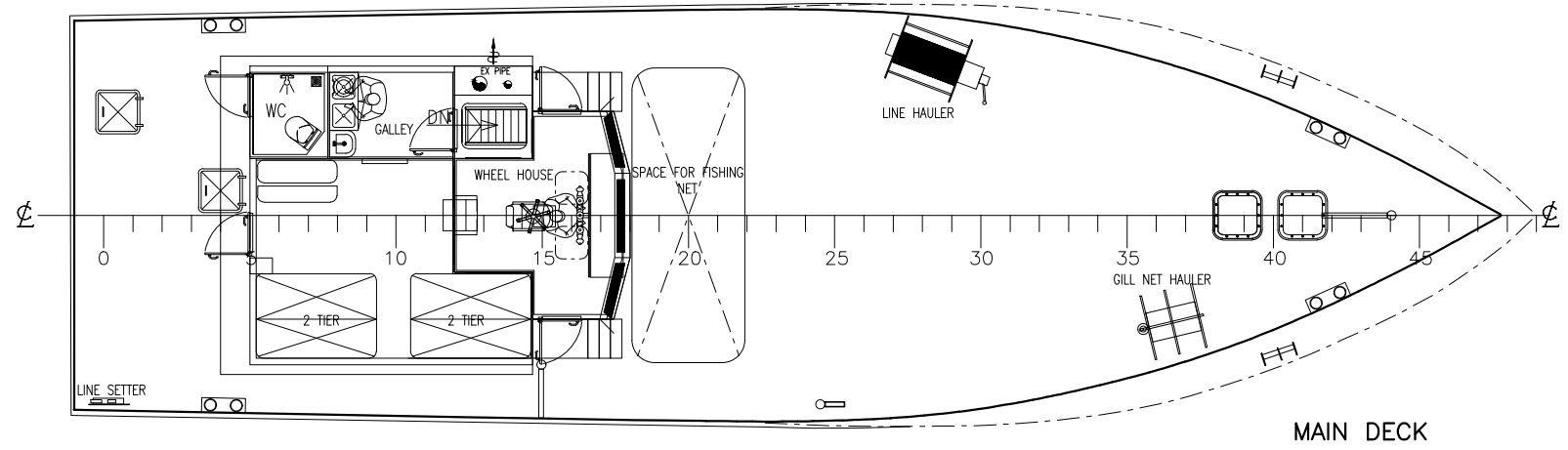
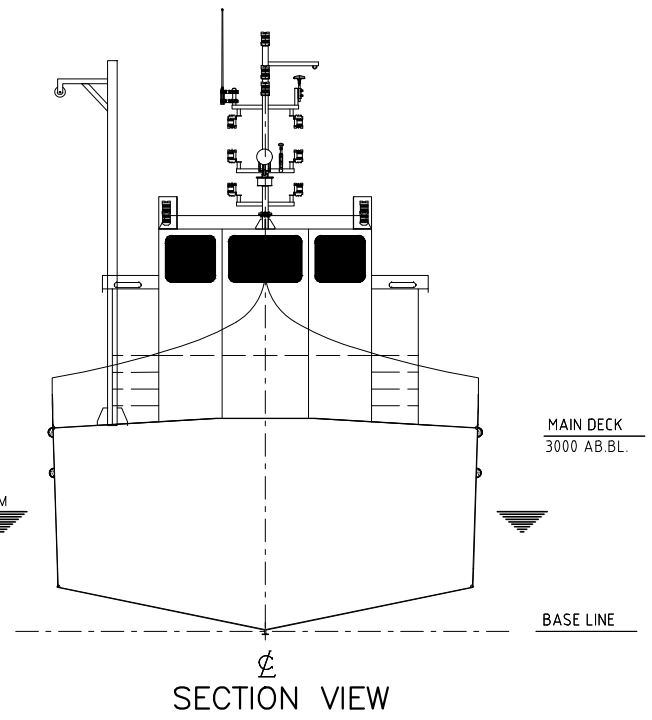
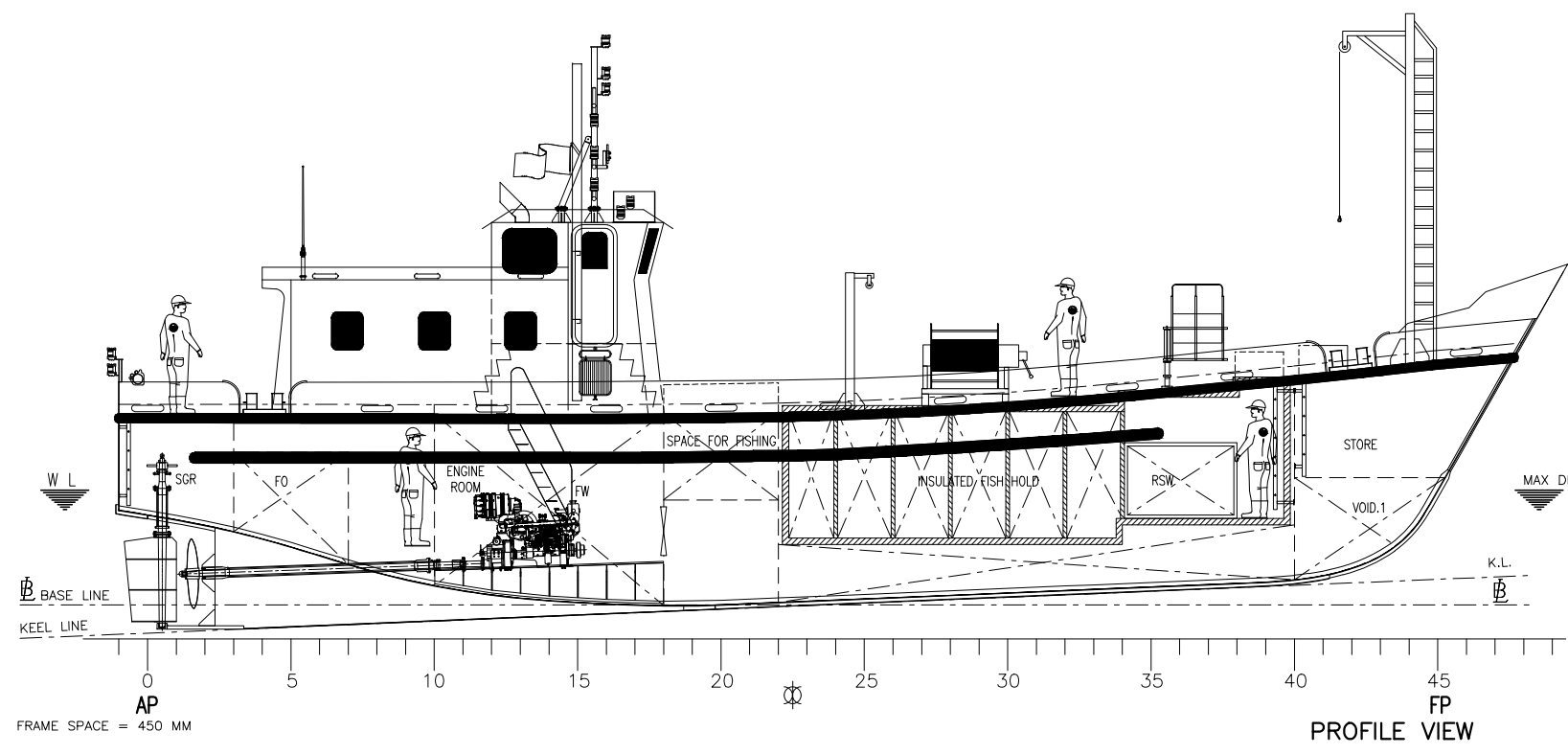
FRAME SPACING..... 450 MM

SPEED..... 8 KNOTS.

MAIN ENGINE..... 1 x 280 HP

CUSTOMER DEPARTMENT OF FISHERIES GOVT. OF ODISHA Yard Nos.:  Design ICAR-CIFT COCHIN-29,	18 m Loa WFRP- TRAWLER			
	TITLE GENERAL ARRANGEMENT			
	1:80	ICAR-CIFT 2.5.2026		Rev.2
	Scale	Project No.	Dwg. no.	Sheet No

THIS DRAWING IS THE PROPERTY OF ICAR-CIFT, Cochin. THE DRAWING CAN NOT BE MADE PUBLIC, COPIED OR OTHERWISE USED, WITHOUT WRITTEN CONSENT.



MAIN PARTICULARS :

LENGTH O.A..... abt 18.00 M.

BREADTH (MLD)..... abt 6.20 M.


DEPTH (MIDSHIP)..... abt 3.50 M.

DRAFT (MAX.)..... abt 1.80 M.

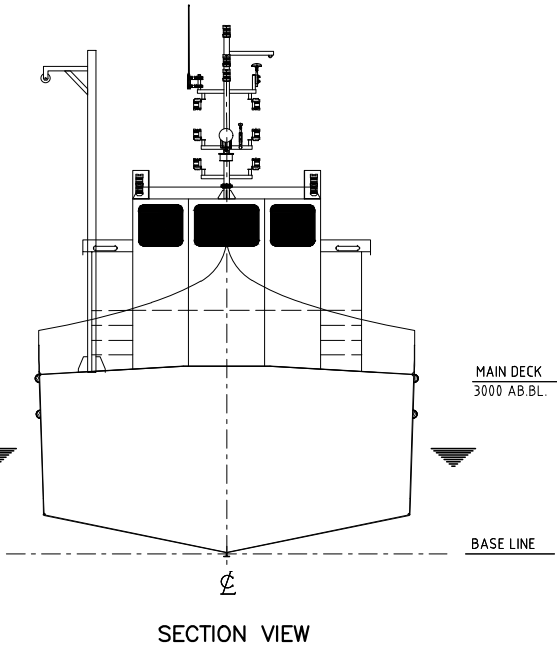
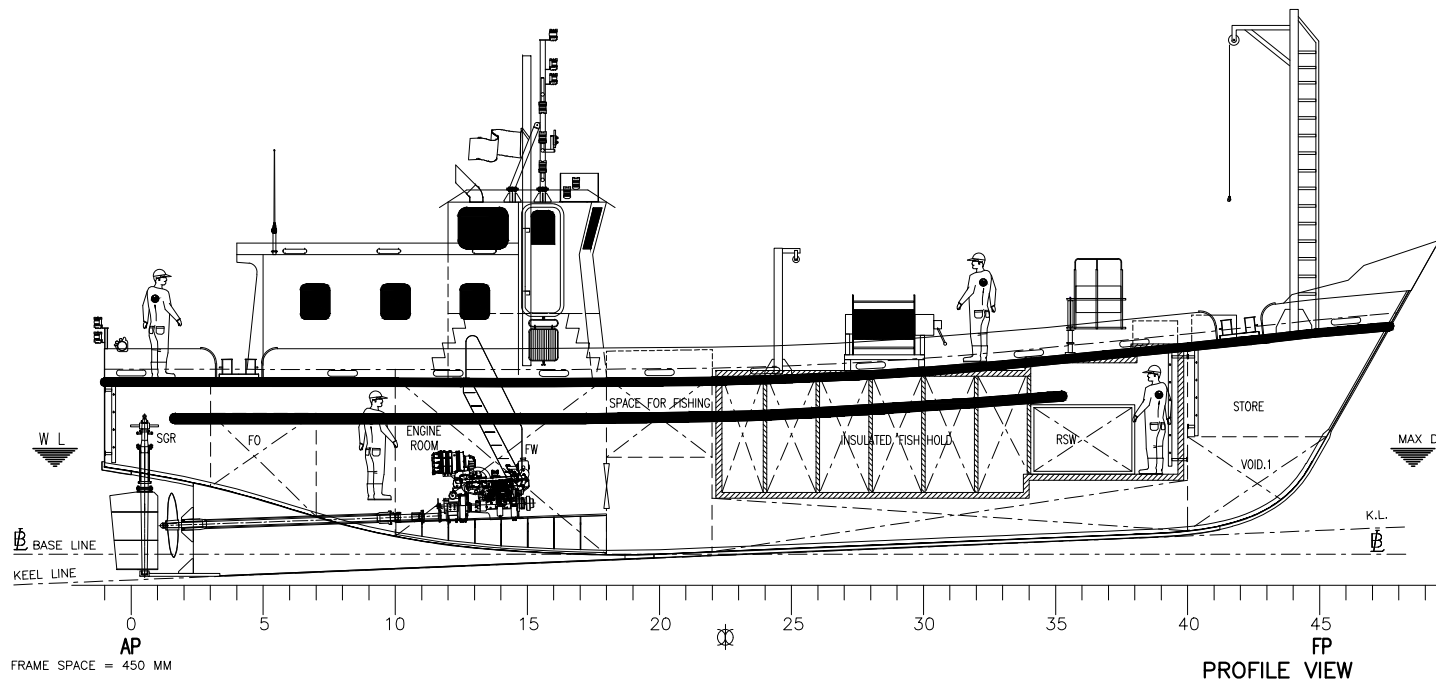
FRAME SPACING..... 450 MM

SPEED..... 8 KNOTS.

MAIN ENGINE..... 1 x 280 HP

CUSTOMER DEPARTMENT OF FISHERIES GOVT. OF ODISHA Yard Nos.:  Design ICAR-CIFT COCHIN-29,	18 m Loa Wooden- TRAWLER			Rev.2 01/01
	GENERAL ARRANGEMENT			
Scale 1:80	Project No. ICAR-CIFT 2.5.2026	Dwg. no.	Sheet No.	

THIS DRAWING IS THE PROPERTY OF ICAR-CIFT, COCHIN. THE DRAWING CAN NOT BE MADE PUBLIC, COPIED OR OTHERWISE USED, WITHOUT WRITTEN CONSENT.



MAIN PARTICULARS :

LENGTH O.A..... abt 20.00 M.

BREADTH (MLD)..... abt 6.86 M.

DEPTH (MIDSHIP)..... abt 3.96 M.

DRAFT (MAX.)..... abt 1.90 M.

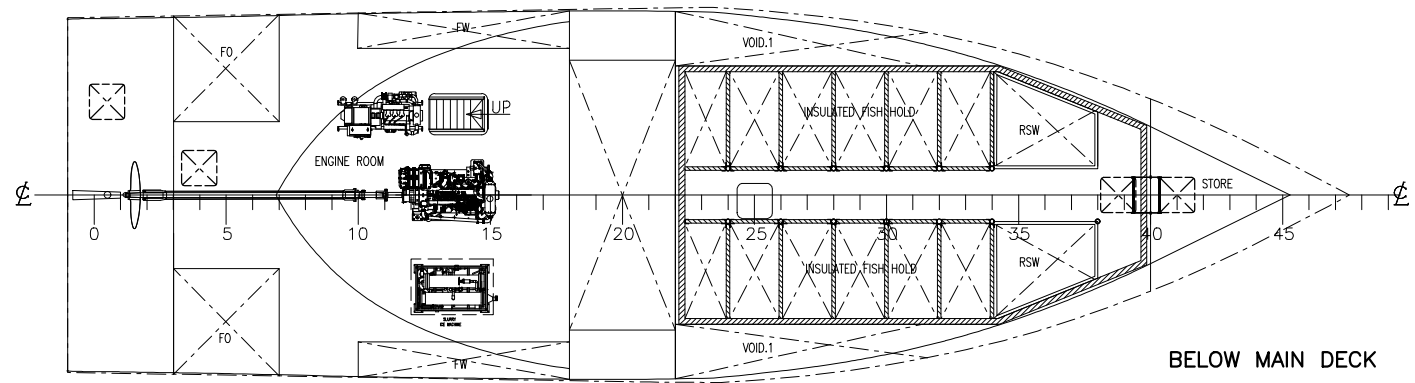
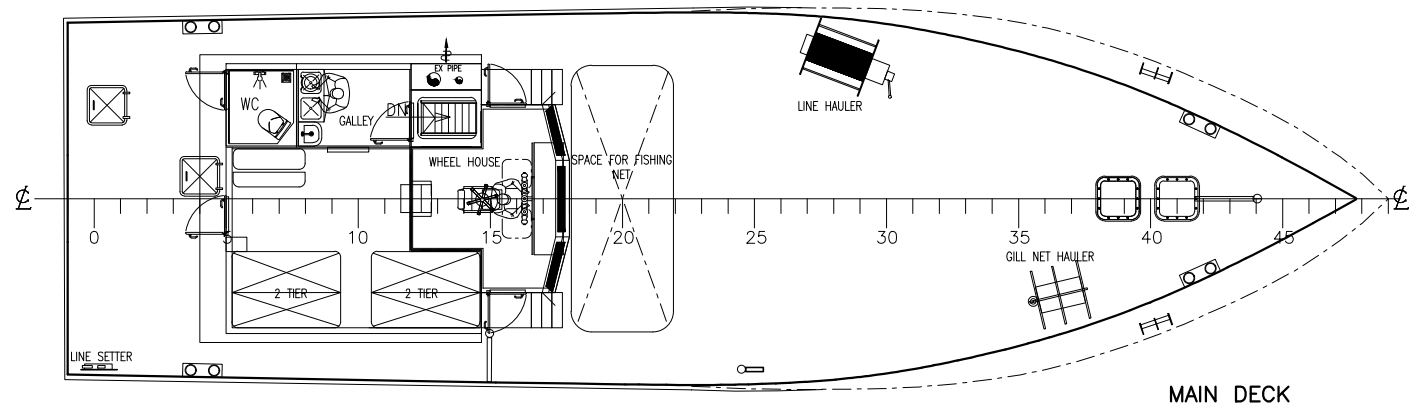
FRAME SPACING..... 450 MM

SPEED..... 8 KNOTS.

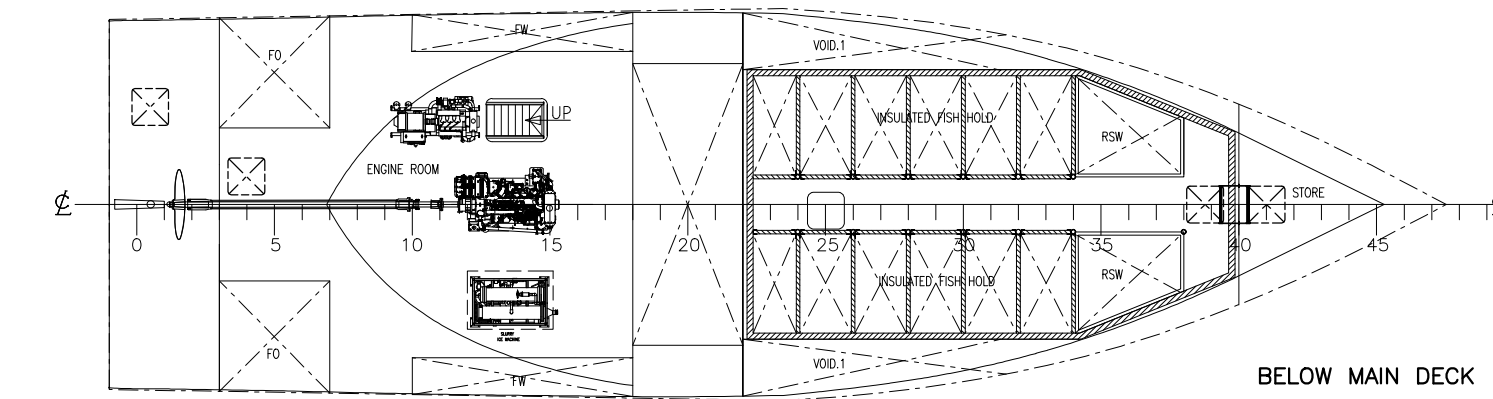
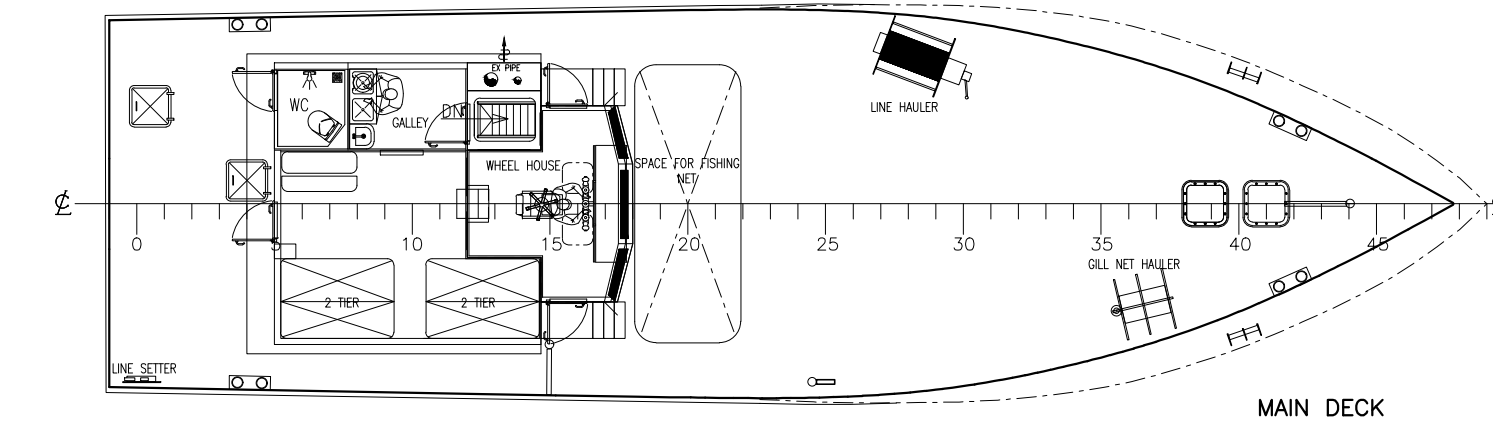
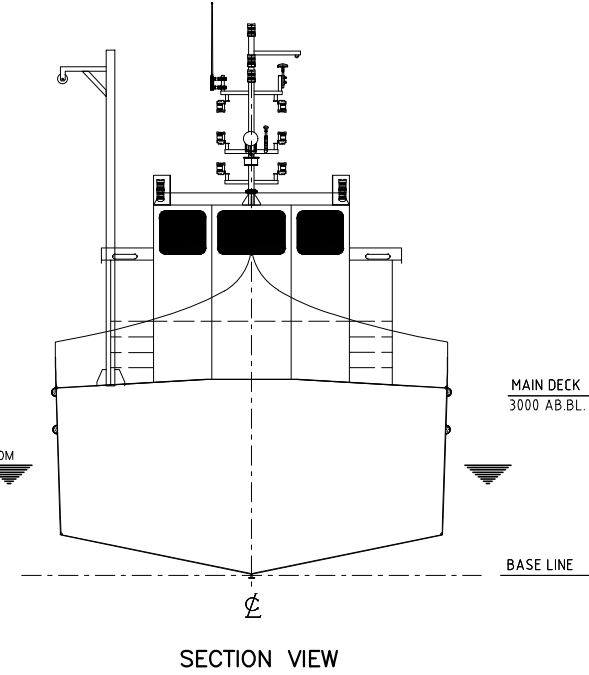
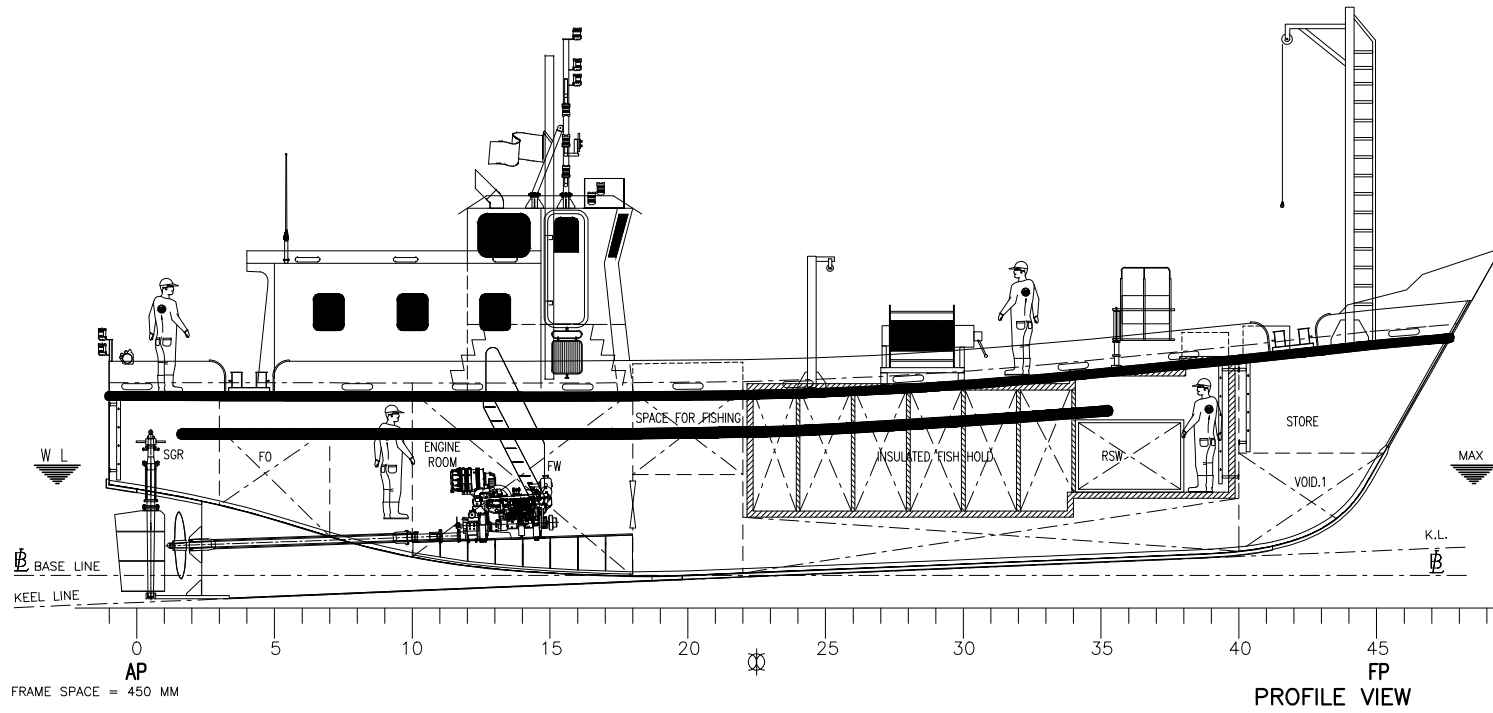
INSULATED FISH HOLD..... abt 20 Cu m.

MACHINERY:

MAIN ENGINE..... 1 x 280 HP



CUSTOMER DEPARTMENT OF FISHERIES GOVT. OF ODISHA		20.0 m Loa Wooden-TRAWLER			
Yard Nos.:		TITLE			
Design ICAR-CIFT COCHIN-29,		GENERAL ARRANGEMENT			
1:80	A3	CIFT 2.5.26	P121-101-001	01/01	
Scale	Format	Project No.	Dwg. no.	Sheet No	
THIS DRAWING IS THE PROPERTY OF ICAR-CIFT, COCHIN. THE DRAWING CAN NOT BE MADE PUBLIC, COPIED OR OTHERWISE USED, WITHOUT WRITTEN CONSENT.					



MAIN PARTICULARS :

LENGTH O.A..... abt 20.00 M.

BREADTH (MLD)..... abt 6.86 M.

DEPTH (MIDSHIP)..... abt 3.96 M.

DRAFT (MAX.)..... abt 1.90 M.

FRAME SPACING..... 450 MM

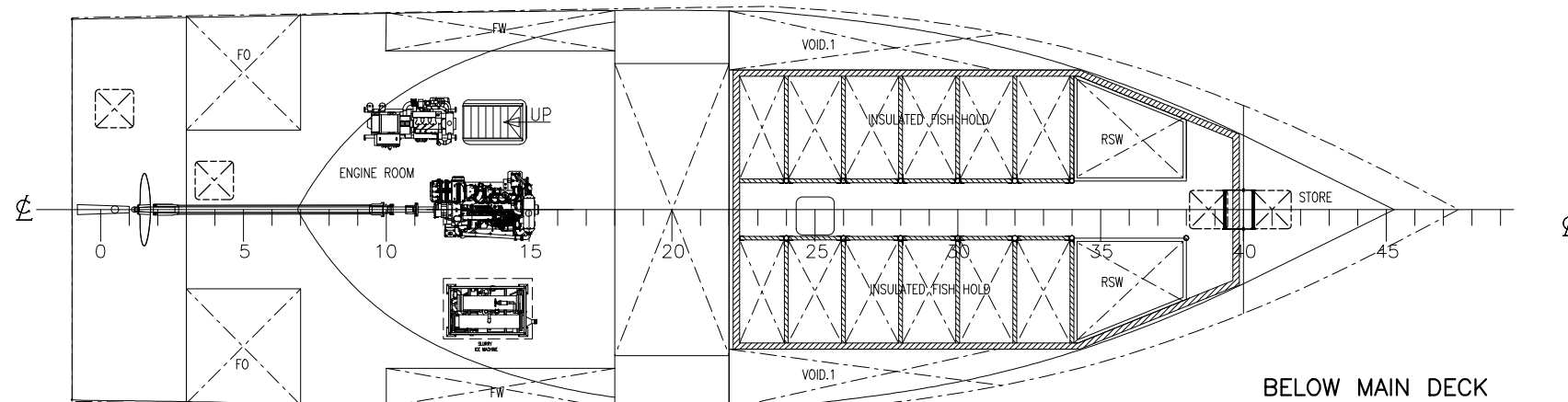
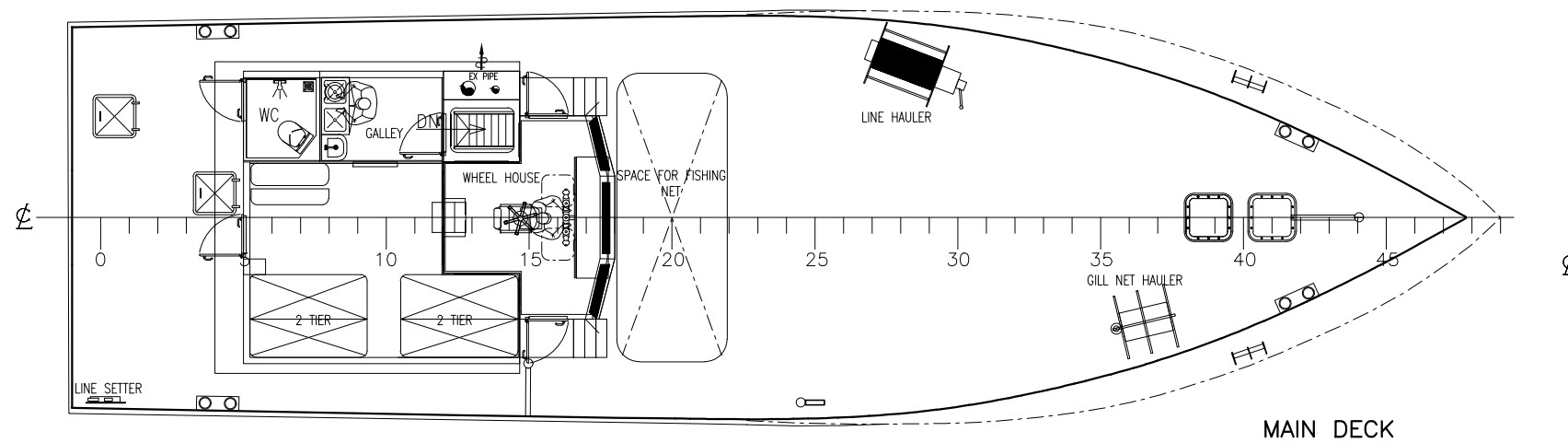
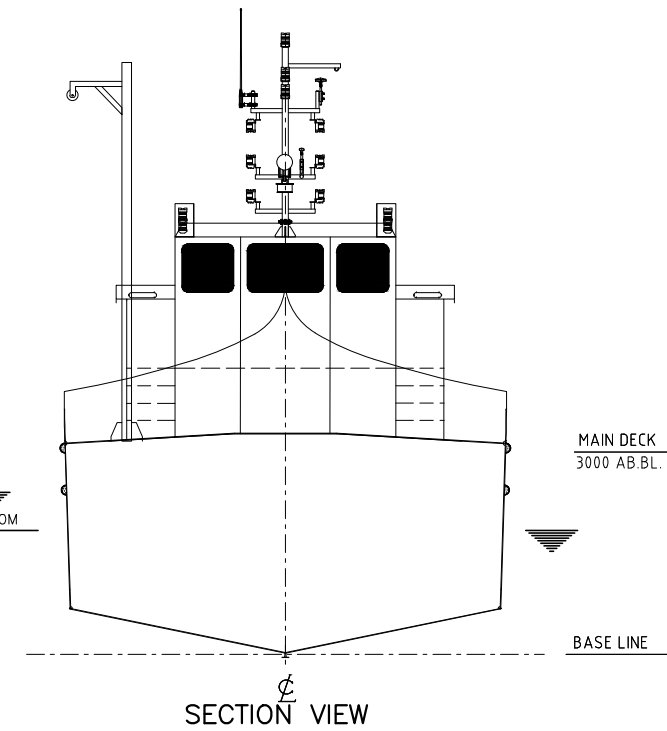
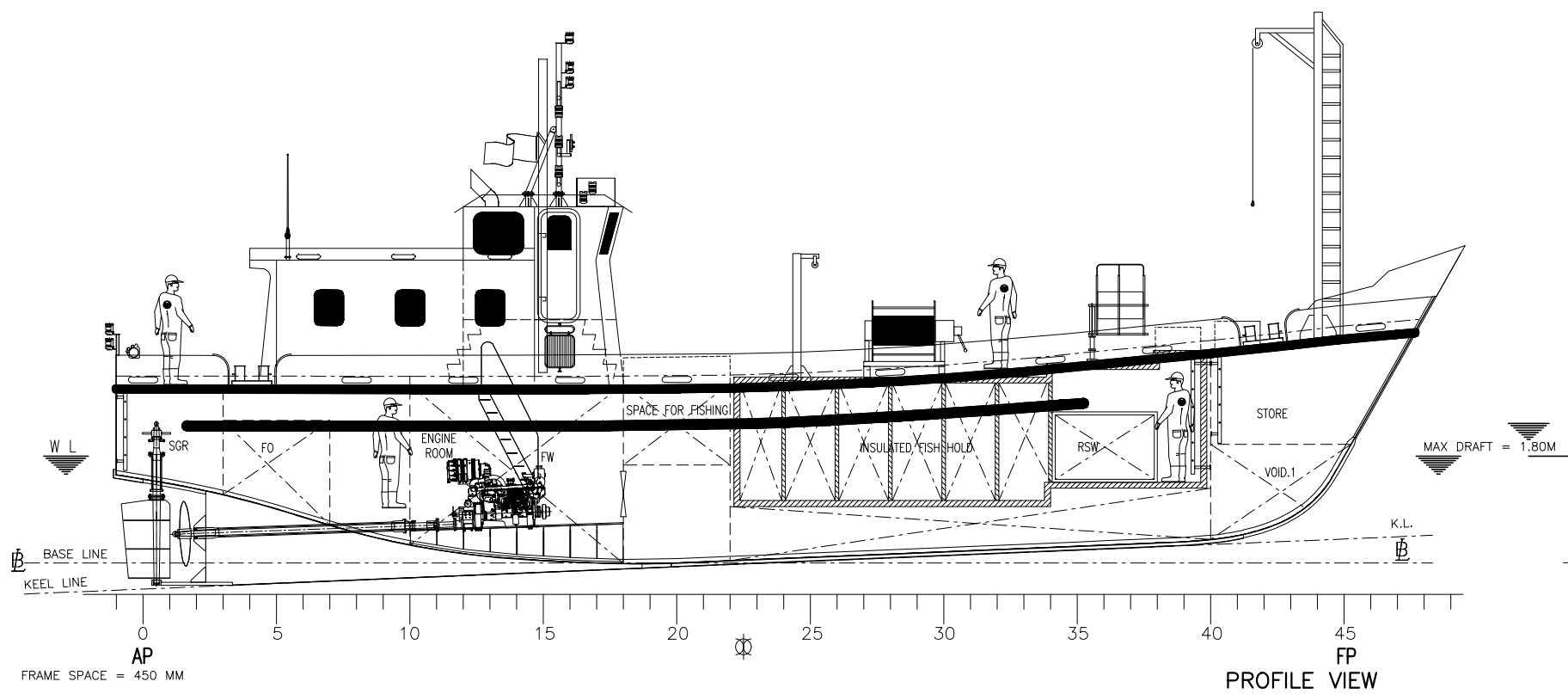
SPEED..... 8 KNOTS.

INSULATED FISH HOLD..... abt 20 Cu m.

MACHINERY:

MAIN ENGINE..... 1 x 280 HP

CUSTOMER DEPARTMENT OF FISHERIES GOVT. OF ODISHA	20.0 m Loa WFRP TRAWLER				
	TITLE				
Yard Nos.:	GENERAL ARRANGEMENT				
 Design ICAR-CIFT COCHIN-29,	1:80	A3	CIFT 2.5.26	P121-101-001	01/01
	Scale	Format	Project No.	Dwg. no.	Sheet No
<small>THIS DRAWING IS THE PROPERTY OF ICAR-CIFT, Cochin. THE DRAWING CAN NOT BE MADE PUBLIC, COPIED OR OTHERWISE USED, WITHOUT WRITTEN CONSENT.</small>					



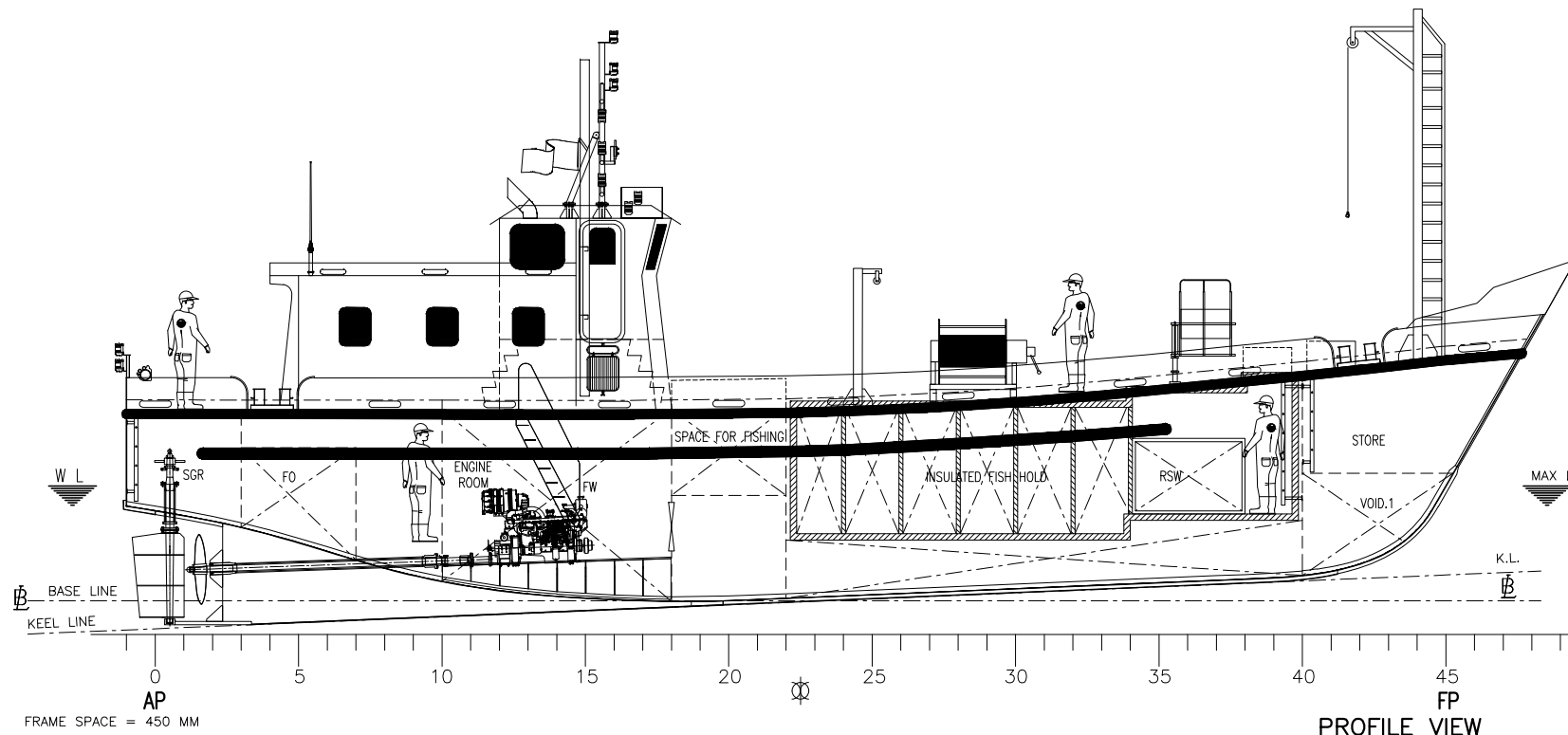
MAIN PARTICULARS :

LENGTH O.A..... abt 23.50 M.
 BREADTH (MLD)..... abt 7.8 M.
 DEPTH (MIDSHIP)..... abt 3.10 M.
 DRAFT (MAX.)..... abt 1.80 M.
 FRAME SPACING..... 450 MM
 SPEED..... 8 KNOTS.
 INSULATED FISH HOLD..... abt 30 Cu m.

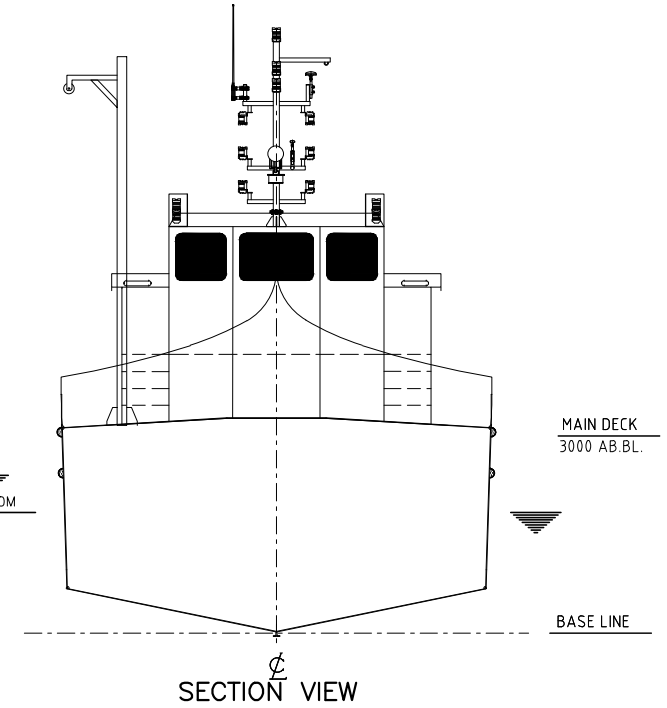
MACHINERY:

MAIN ENGINE..... 1 x 500 HP
 DG SET..... 1 x 15 kVA approx

CUSTOMER DEPARTMENT OF FISHERIES GOVT. OF ODISHA		23.5 m LOA FRP TRAWLER	
Yard Nos.:		TITLE	
Design ICAR-CIFT COCHIN-29,		GENERAL ARRANGEMENT	
		1:80	Rev.2
		Scale	ICAR-CIFT 2.5.2026
		Project No.	Dwg. no.
			01/01
THIS DRAWING IS THE PROPERTY OF COCHIN SHIPYARD LTD. THE DRAWING CAN NOT BE MADE PUBLIC. COPIED OR OTHERWISE USED, WITHOUT WRITTEN CONSENT.			

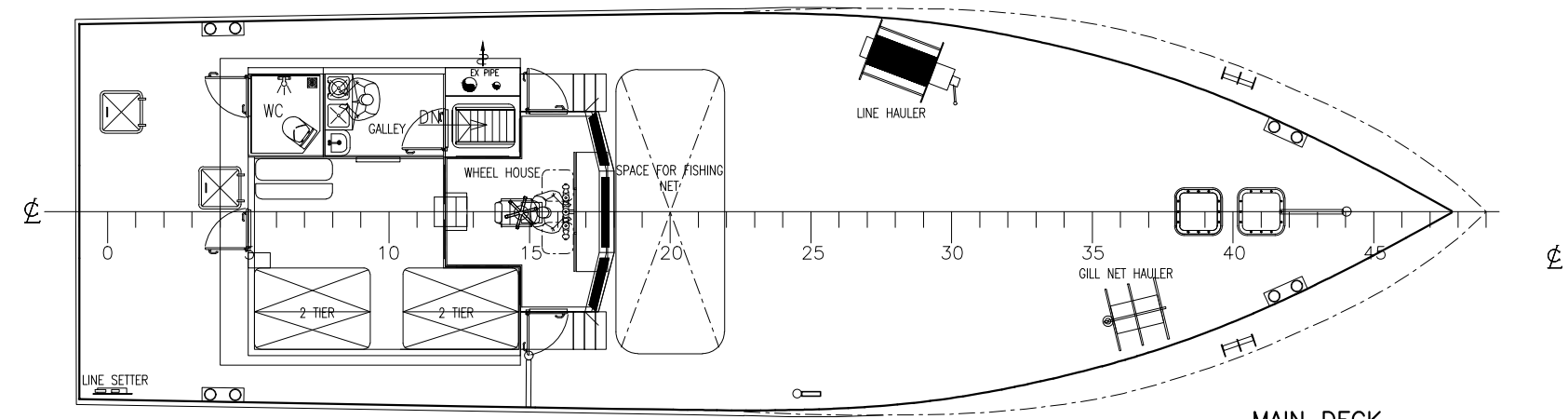


PROFILE VIEW

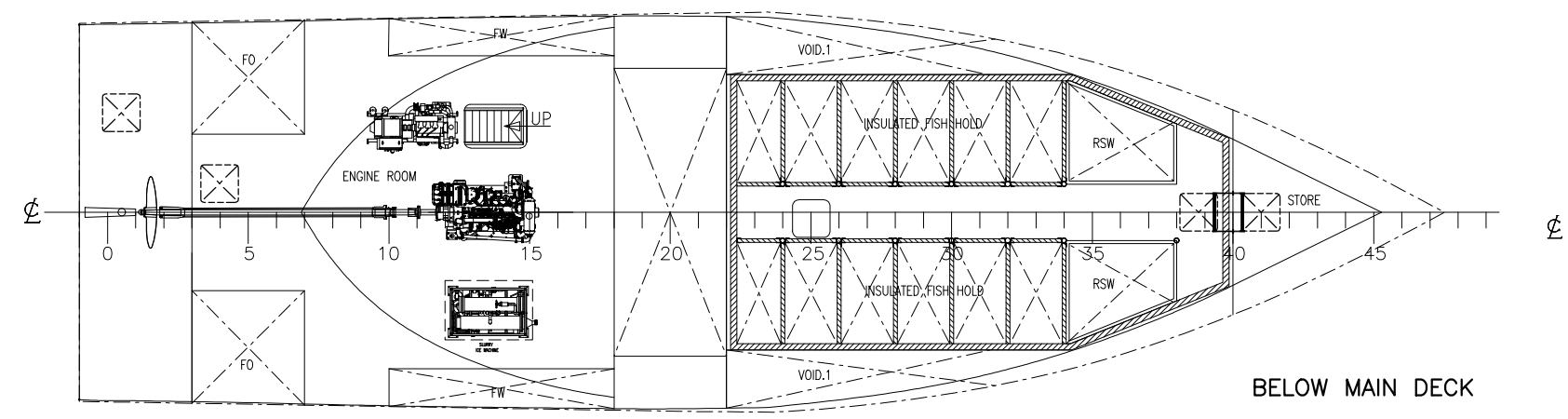


SECTION VIEW

FRAME SPACE = 450 MM



MAIN DECK



BELOW MAIN DECK

MAIN PARTICULARS :

LENGTH O.A..... abt 23.50 M.

BREADTH (MLD)..... abt 7.8 M.

DEPTH (MIDSHIP)..... abt 3.10 M.

DRAFT (MAX.)..... abt 1.80 M.

FRAME SPACING..... 450 MM


SPEED..... 8 KNOTS.

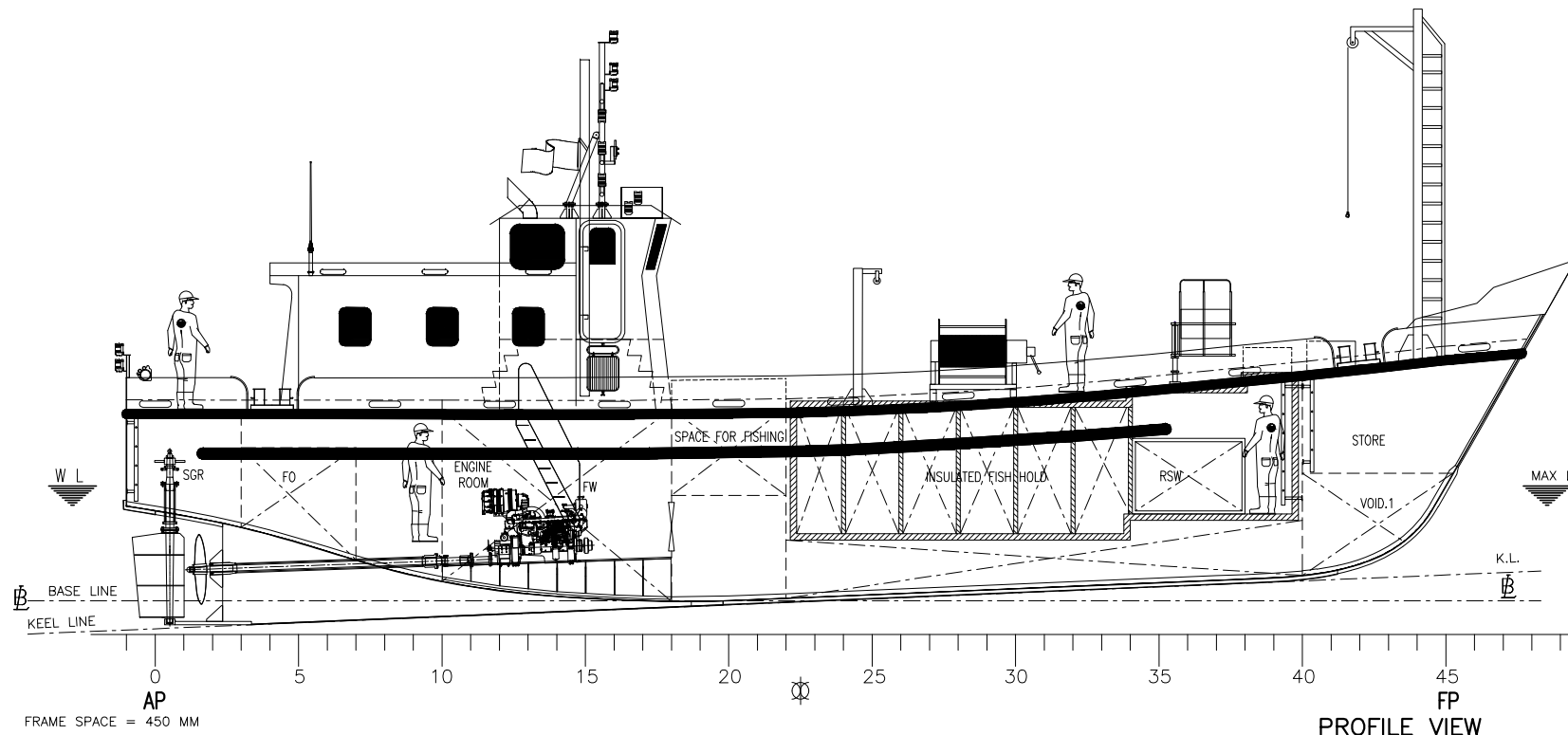
INSULATED FISH HOLD..... abt 30 Cu m.

MACHINERY:

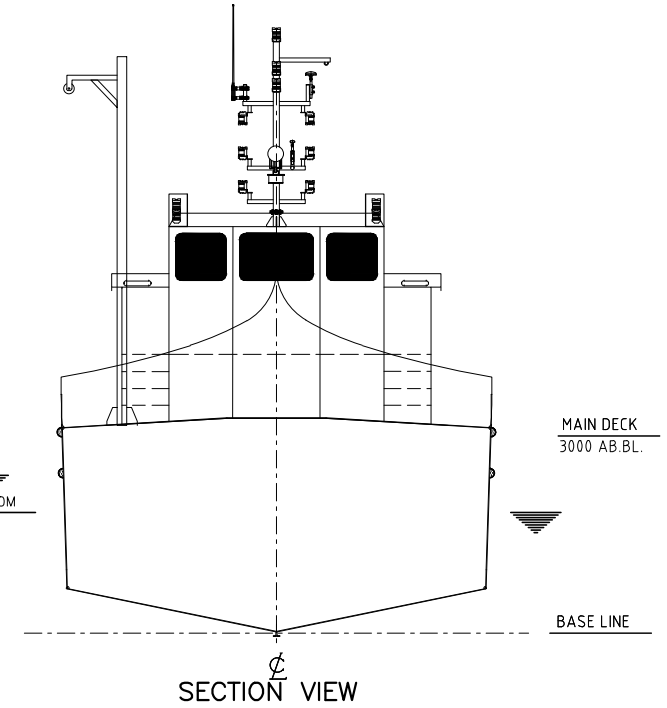
MAIN ENGINE..... 1 x 500 HP

DG SET..... 1 x 15 kVA approx

CUSTOMER DEPARTMENT OF FISHERIES GOVT. OF ODISHA		23.5 m Loa FRP Trawler cum Long liner cum Gill netter	
Yard Nos.:		TITLE GENERAL ARRANGEMENT	
 Design ICAR-CIFT COCHIN-29,		Rev.2	
1:80	ICAR-CIFT 2.5.2026	01/01	
Scale	Project No.	Dwg. no.	Sheet No.
<small>THIS DRAWING IS THE PROPERTY OF COCHIN SHIPYARD LTD. THE DRAWING CAN NOT BE MADE PUBLIC. COPIED OR OTHERWISE USED, WITHOUT WRITTEN CONSENT.</small>			

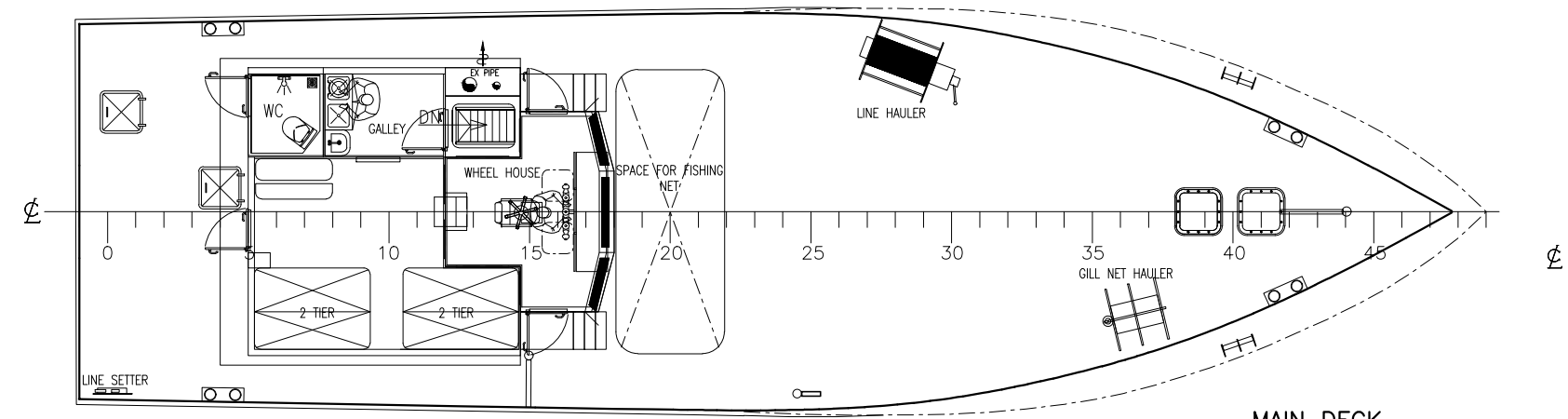


PROFILE VIEW

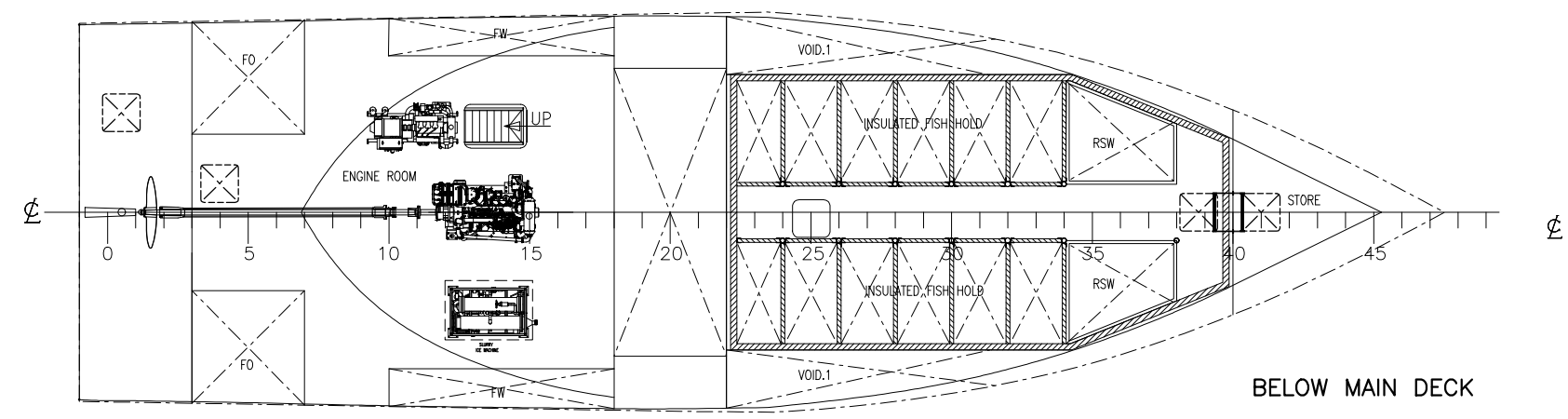


SECTION VIEW

FRAME SPACE = 450 MM



MAIN DECK




BELOW MAIN DECK

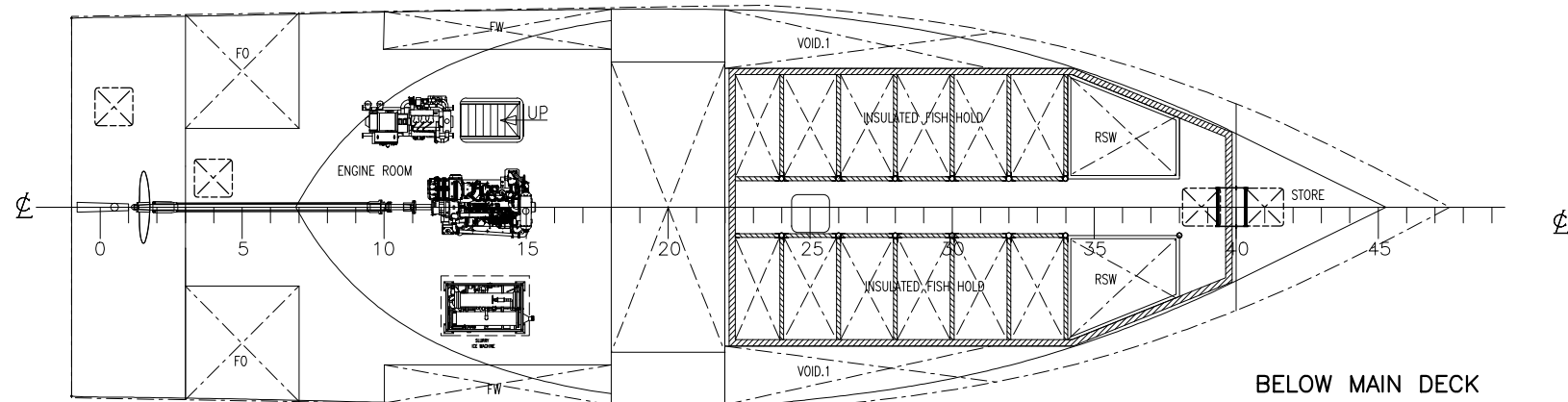
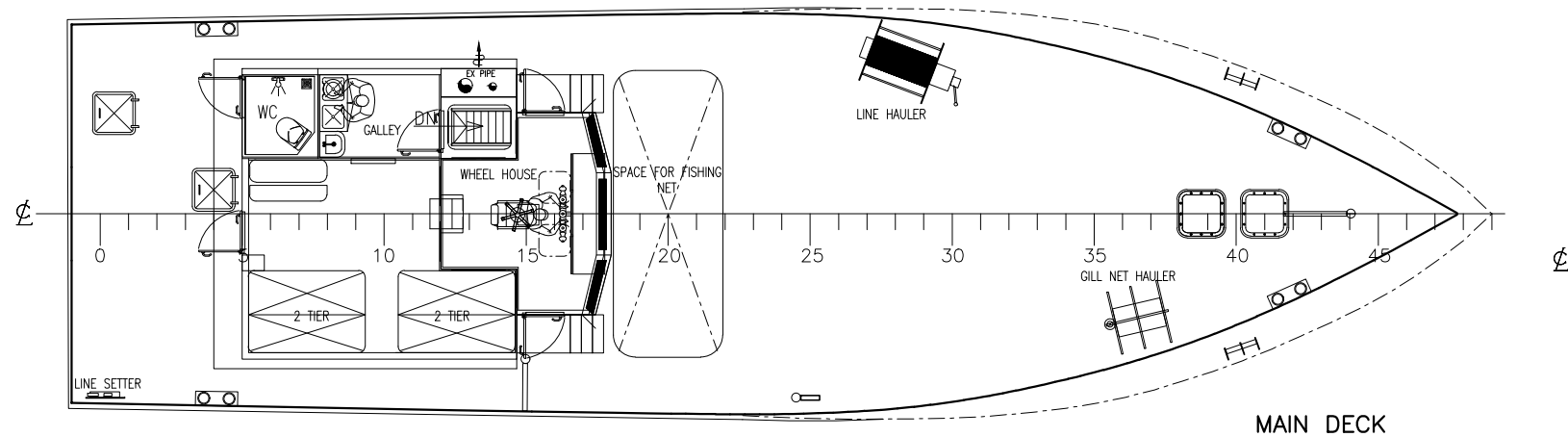
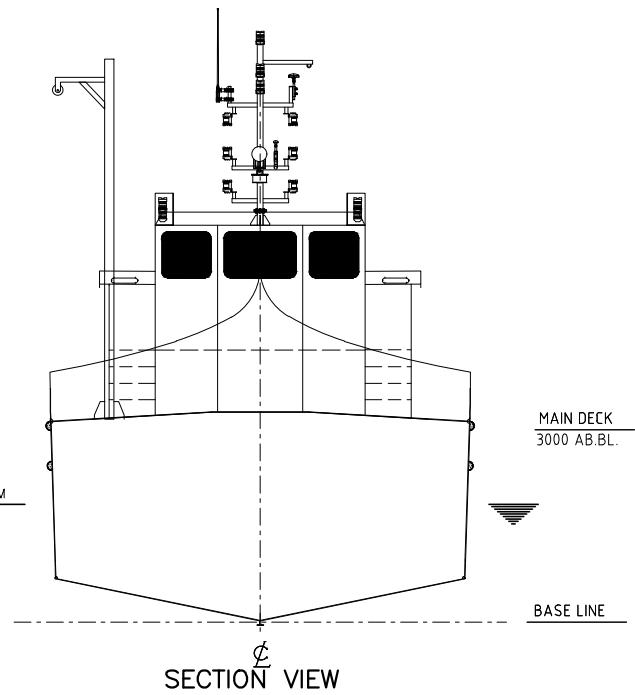
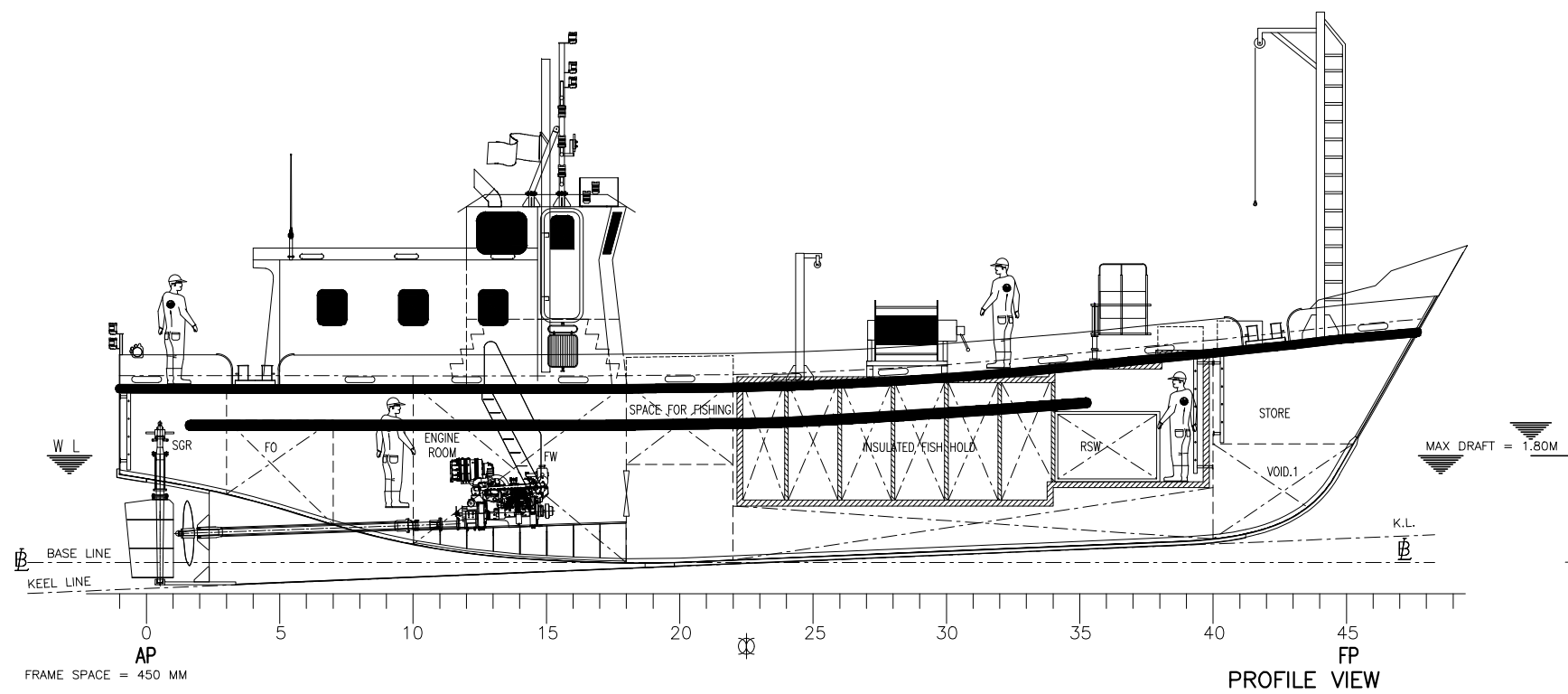
MAIN PARTICULARS :

LENGTH O.A..... abt 23.50 M.
 BREADTH (MLD)..... abt 7.8 M.
 DEPTH (MIDSHIP)..... abt 3.10 M.
 DRAFT (MAX.)..... abt 1.80 M.
 FRAME SPACING..... 450 MM
 SPEED..... 8 KNOTS.
 INSULATED FISH HOLD..... abt 30 Cu m.

MACHINERY:

MAIN ENGINE..... 1 x 500 HP
 DG SET..... 1 x 15 kVA approx

CUSTOMER DEPARTMENT OF FISHERIES GOVT. OF ODISHA		23.5 m Loa FRP Trawler cum Long liner cum Gill netter	
Yard Nos.:		TITLE GENERAL ARRANGEMENT	
 Design ICAR-CIFT COCHIN-29,		Rev.2	
1:80	ICAR-CIFT 2.5.2026	01/01	
Scale	Project No.	Dwg. no.	Sheet No.
<small>THIS DRAWING IS THE PROPERTY OF COCHIN SHIPYARD LTD. THE DRAWING CAN NOT BE MADE PUBLIC. COPIED OR OTHERWISE USED, WITHOUT WRITTEN CONSENT.</small>			



MAIN PARTICULARS :

LENGTH O.A..... abt 23.50 M.

BREADTH (MLD)..... abt 7.8 M.

DEPTH (MIDSHIP)..... abt 3.10 M.

DRAFT (MAX.)..... abt 1.80 M.

FRAME SPACING..... 450 MM


SPEED..... 8 KNOTS.

INSULATED FISH HOLD..... abt 30 Cu m.

MACHINERY:

MAIN ENGINE..... 1 x 500 HP

DG SET..... 1 x 15 kVA approx

CUSTOMER DEPARTMENT OF FISHERIES GOVT. OF ODISHA		23.5 m Loa Wooden Long liner cum Gill netter	
Yard Nos.:		TITLE GENERAL ARRANGEMENT	
 Design ICAR-CIFT COCHIN-29,		Rev.2	
1:80	ICAR-CIFT 2.5.2026	01/01	
Scale	Project No.	Dwg. no.	Sheet No.
<small>THIS DRAWING IS THE PROPERTY OF COCHIN SHIPYARD LTD. THE DRAWING CAN NOT BE MADE PUBLIC. COPIED OR OTHERWISE USED, WITHOUT WRITTEN CONSENT.</small>			